

# BONJET

ATELIER

---

## GLOSS PEARL

---



The BONJET ATELIER premium photo papers have been developed to offer the best possible photographic quality. They set standards for all inkjet photo papers on the market.

BONJET ATELIER GLOSS is a premium quality photo paper with a 300g/m<sup>2</sup> resin-coated paper base. The glossy finish offers a high and even gloss without matting. The nanoporous inkjet coating of the latest generation warrants not only best compatibility with all high quality water based dye and pigmented inks, but features instant drying, even gloss, good scratch resistance and brilliant, vibrant colours.

BONJET PEARL uses the same technology as the glossy paper, but has a 300g/m<sup>2</sup> RC paper base with a pearl texture. The silky, slightly textured semi-glossy surface adds a precious appeal and unique look; it also offers an improved robustness against scratches and finger prints and avoids reflection.

Both papers are being used in professional photography. Portrait and wedding photos, nudes and stills, art and landscape work come to its best advantage with these BONJET ATELIER photo papers. The fine, slightly warmish base tint improves skin tones and leaves a pleasant impression, the excellent sharpness and brilliant colour rendition as well as wide colour space warrant first quality print results.

These premium papers feel instantly dry after printing and are resistant against smearing and water splashes. The possible ink load is high; the media are very robust against adverse conditions. They are fully compatible with all water based dye and pigmented inks commonly used in photo quality desktop and large format printers.

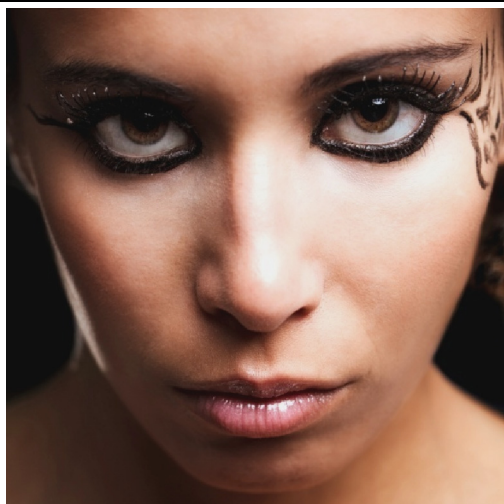
## Technical Data

	<b>GLOSS</b>	<b>PEARL</b>
Weight [ISO 536]	300 ± 10g/m <sup>2</sup>	300 ± 10g/m <sup>2</sup>
Caliper – metric [ISO 534]	290 ± 10µm	290 ± 10µm
Caliper – UK/US	11,5mil	11,5mil
Opacity [ISO 2471]	> 97%	> 97%
Gloss at 60° [ISO 8254-1]	48 ± 5%	18 ± 5%
Base tint L*a*b [DIN 6174]	94,4; -0,4; -2,5 ± 0,4	94,4; -0,4; -2,5 ± 0,4

## Available Sizes

	<b>GLOSS</b>	<b>PEARL</b>
10 x 15cm / 100 sheet		●
12,7 x 17,8cm / 100 sheet		●
21 x 29,7cm (A4) / 50 and 500 sheet	●	●
29,7 x 42cm (A3) / 30 sheet	●	●
32,9 x 48,3cm (A3+) / 30 sheet	●	●
42x59,4cm (A2) / 30 sheet		●
43,2cm x 25m	●	●
61cm x 5m (test roll)		●
61cm x 25m	●	●
111,8cm x 25m	●	●
Core diameter	3"	3"

## User Instructions



Protect the paper from direct sunshine and moisture. In case you store the paper in a different room to the printer, allow for suitable adaption to the climatic conditions before opening the packaging, for at least 1 day preferably. Media which has been stored cold and is being used immediately may put on moisture or show excessive curl. Best printing results will be obtained at 23°C (73F) and 50% relative humidity.

BONJET ATELIER photo papers can be printed with all common water based inks. Amongst others, this includes the ink used in desktop printers from Canon, Dell, Epson, HP, Kodak and Lexmark, e.g. Canon Chromalife, Epson Durabrite, or Epson Claria, as well as large format printers of the Canon imagePROGRAF, Epson Stylus Pro and HP Designjet series which are run with Canon Lucia, Epson UltraChrome or HP Vivera ink. Printing profiles for many large format printers can be downloaded from: <ftp://ftp.bon-image.com/profile/>.

BONJET ATELIER photo papers can be laminated hot and cold and are compatible with high quality laminates and mounting films from the various manufacturers, designed for RC photo papers.

Prints on BONJET ATELIER photo papers should be displayed indoor only. For longevity, it is recommended to avoid direct sunshine and moisture.

---

**LE BON  
IMAGE**

**BONJET is presented by:**

LE BON IMAGE  
Gesellschaft für Imaging-Systeme und Zubehör mbH  
Am Holzweg 26 • 65830 Kriftel • Germany  
T: +49 6192 95589 00 • F: +49 6192 95589 20  
I: [www.bon-image.com](http://www.bon-image.com) • E: [info@bon-image.com](mailto:info@bon-image.com)